

THE PARISHES OF COUNTY CLARE

History of Halpins in Co. Clare, Ireland

- 1 Abbey
- 2 Bunratty
- 3 Carran
- 4 Clareabbey
- 5 Clondagad
- 6 Clonlea
- 7 Clonloghan
- 8 Clonrush
- 9 Clooney
- 10 Doora
- 11 Drumcliff
- 12 Drumcreehy
- 13 Drumline
- 14 Dysert
- 15 Feakle
- 16 Feenagh
- 17 Gleninagh
- 18 Inagh
- 19 Inchicronan
- 20 Inishcaltra
- 21 Kilballyowen
- 22 Kilchreest
- 23 Kilconry
- 24 Kilcorney
- 25 Kilfarboy
- 26 Kilfearagh
- 27 Kilfenora
- 28 Kilfiddane

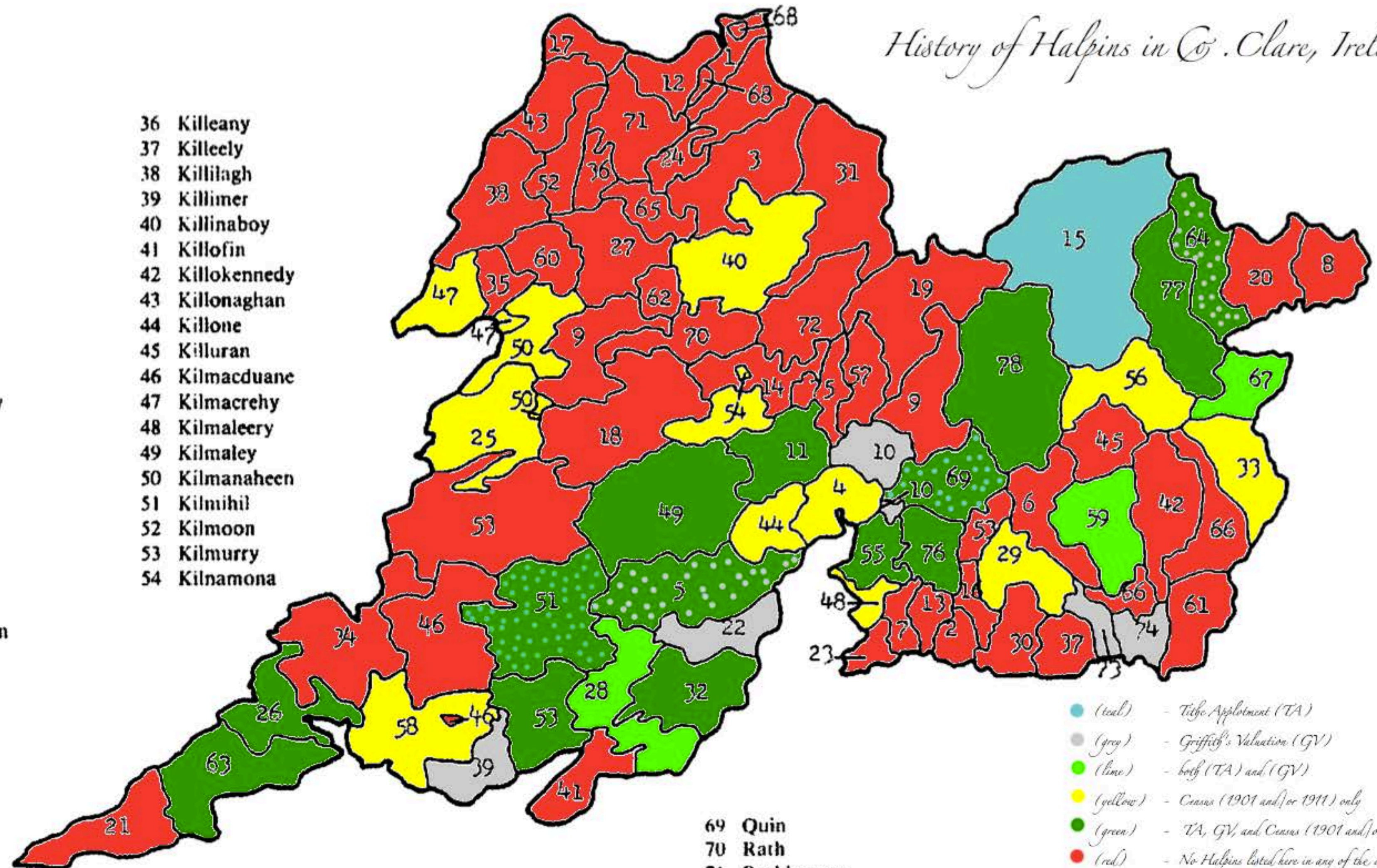
- 36 Killeany
- 37 Killeely
- 38 Killilagh
- 39 Killimer
- 40 Killinaboy
- 41 Killofin
- 42 Killokennedy
- 43 Killonaghan
- 44 Killone
- 45 Killuran
- 46 Kilmacduane
- 47 Kilmacrehy
- 48 Kilmaleery
- 49 Kilmaley
- 50 Kilmanaheen
- 51 Kilmihi
- 52 Kilmoon
- 53 Kilmurry
- 54 Kilnamona

- 29 Kilfinaghta
- 30 Kilfintinan
- 31 Kilkeedy
- 32 Killadysert
- 33 Killaloe
- 34 Killard
- 35 Killaspuglonane

- 55 Kilnasoolagh
- 56 Kilnoc
- 57 Kilraghtis
- 58 Kilrush
- 59 Kilseily
- 60 Kilshanny
- 61 Kiltenanlea

- 62 Kiltoraght
- 63 Moyarta
- 64 Moynoe
- 65 Noughaval
- 66 O'Briensbridge
- 67 Ogonnelloe
- 68 Oughtmama

- 69 Quin
- 70 Rath
- 71 Rathborney
- 72 Ruan
- 73 St. Munchin's
- 74 St. Patrick's
- 75 Templemaley
- 76 Tomfinlough
- 77 Tomgraney
- 78 Tulla



- (teal) - Tithe Applotment (TA)
- (grey) - Griffith's Valuation (GV)
- (lime) - both (TA) and (GV)
- (yellow) - Census (1901 and/or 1911) only
- (green) - TA, GV, and Census (1901 and/or 1911)
- (red) - No Halpins listed here in any of the above 4 sources

**solid color with different coloured dots - a combination of either TA or GV (but not both), and a Census (1901 and/or 1911). The dots indicate which source the Halpins were NOT found in.*

compiled by: kymptock halpin